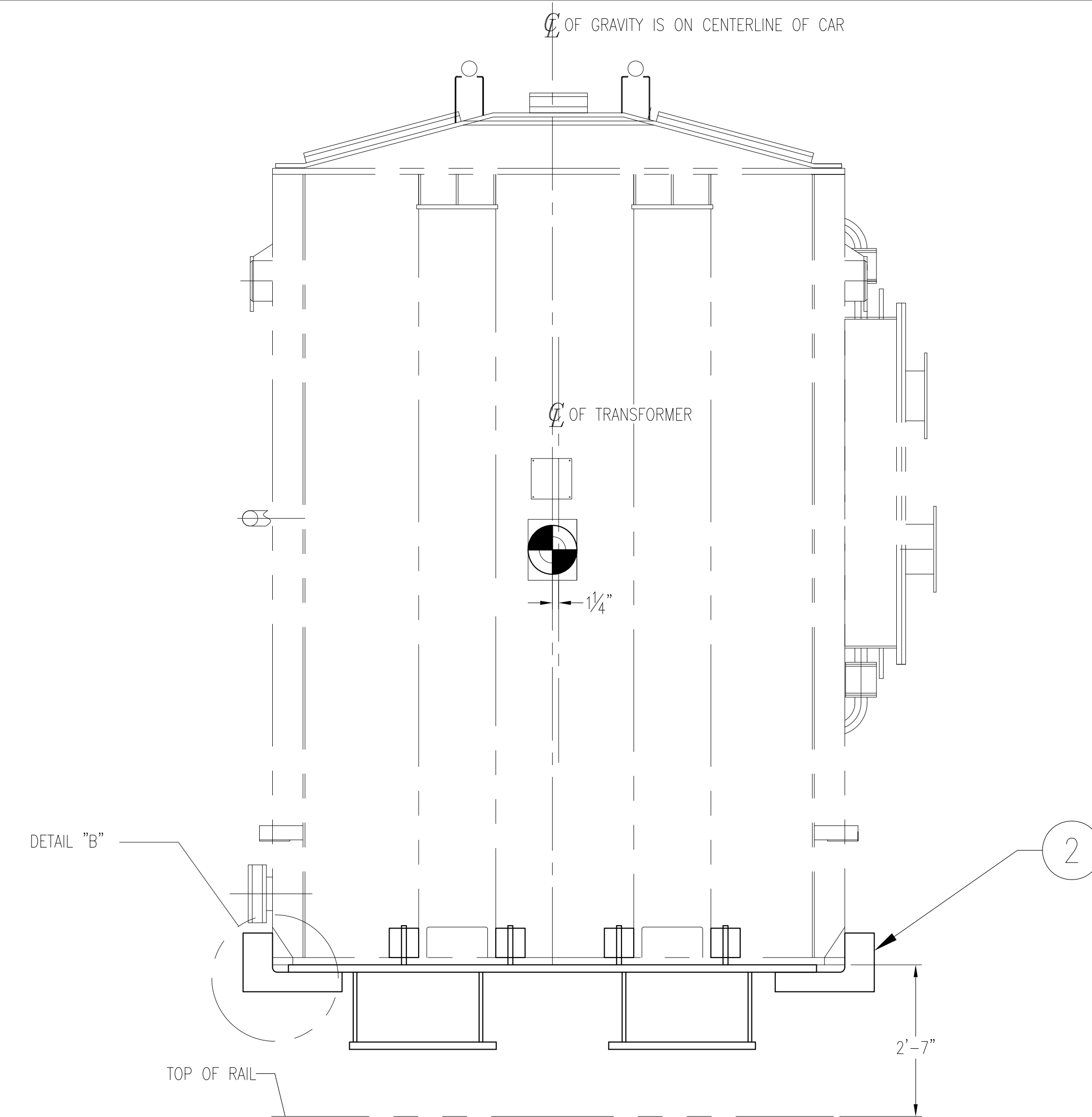
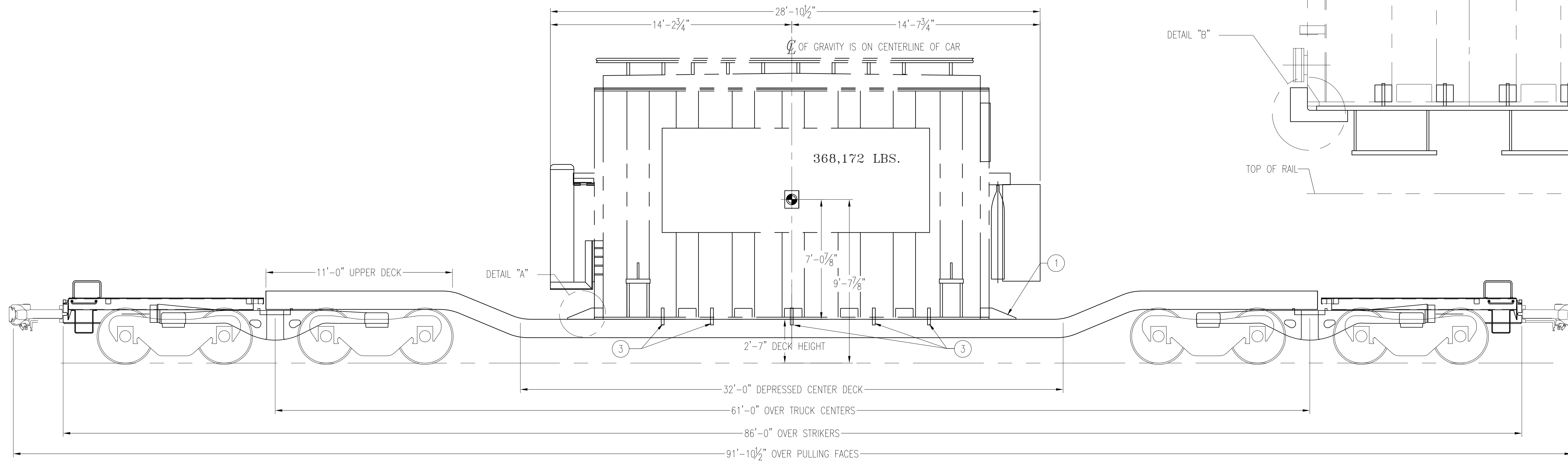
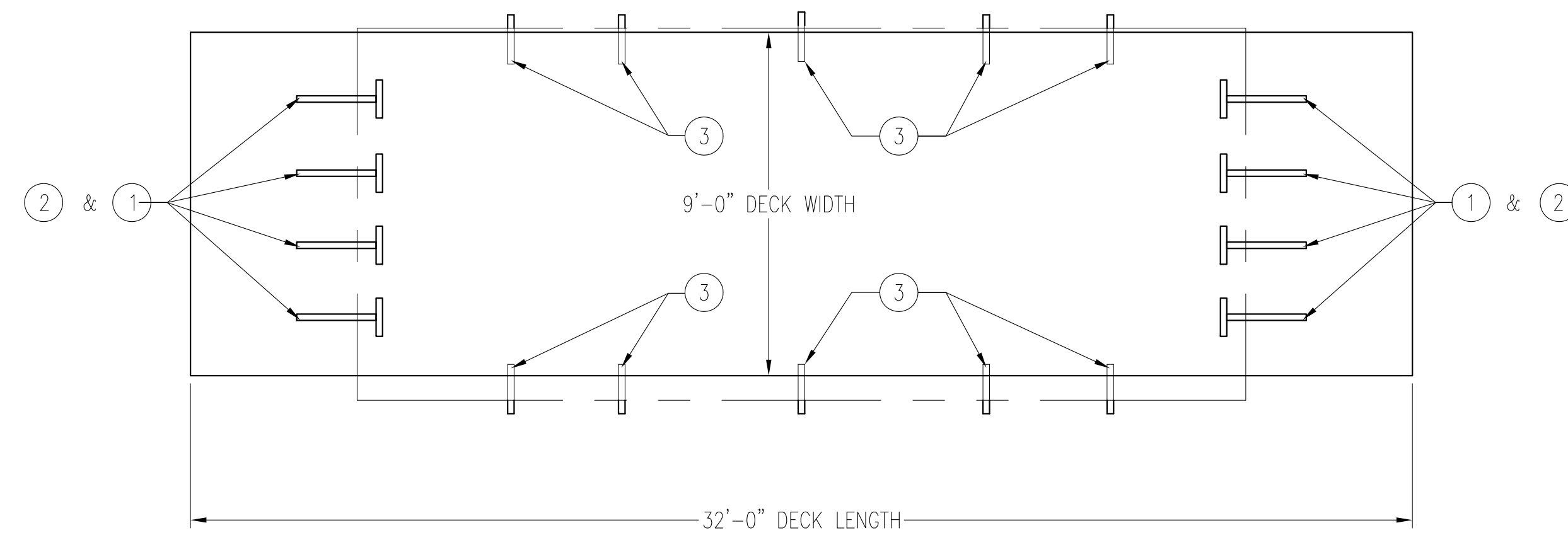
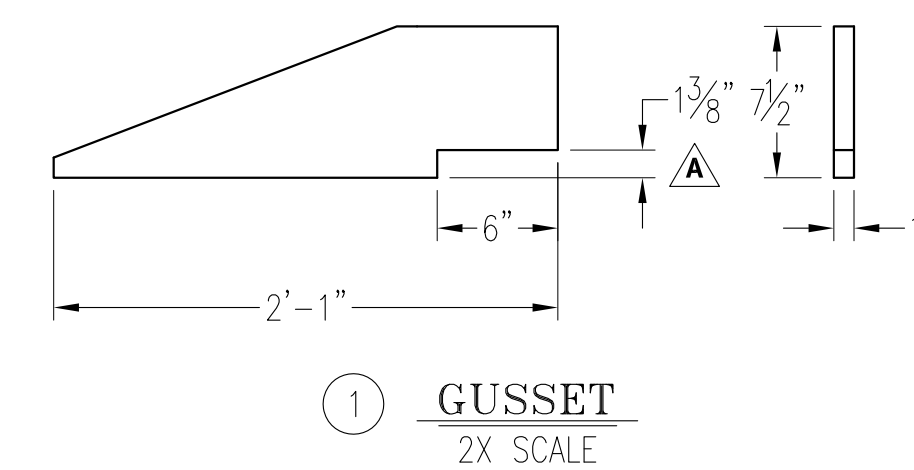
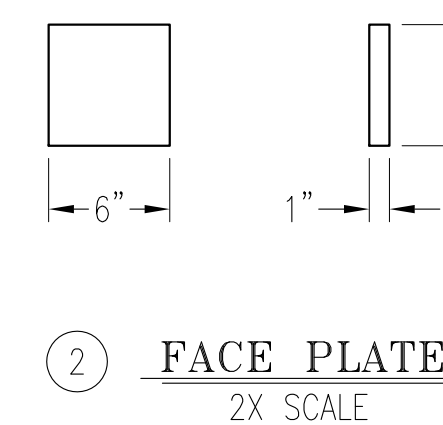
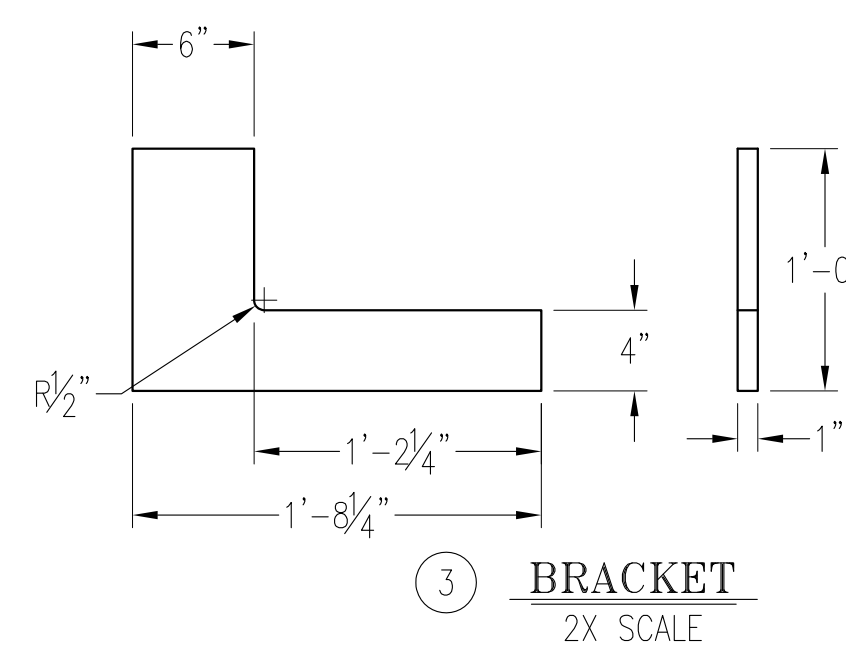
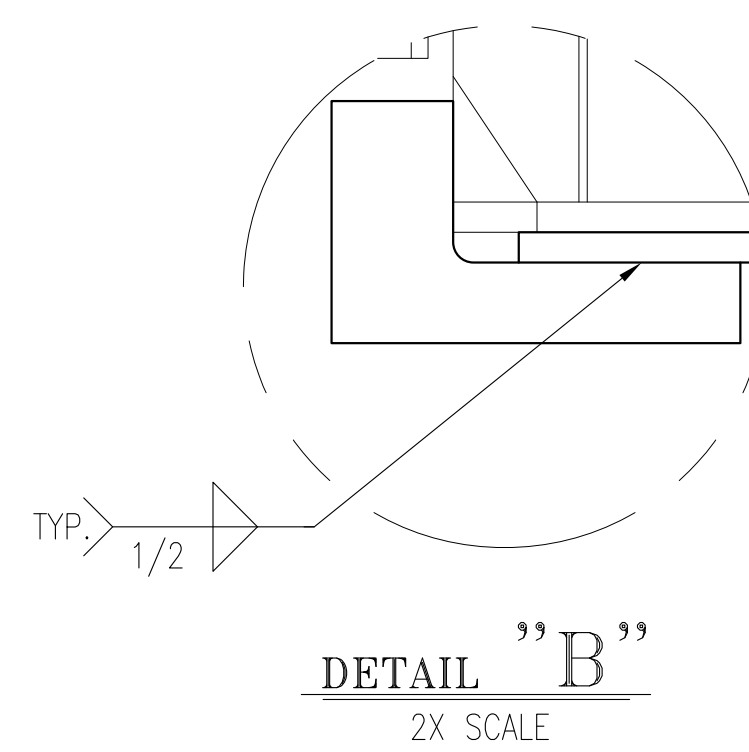
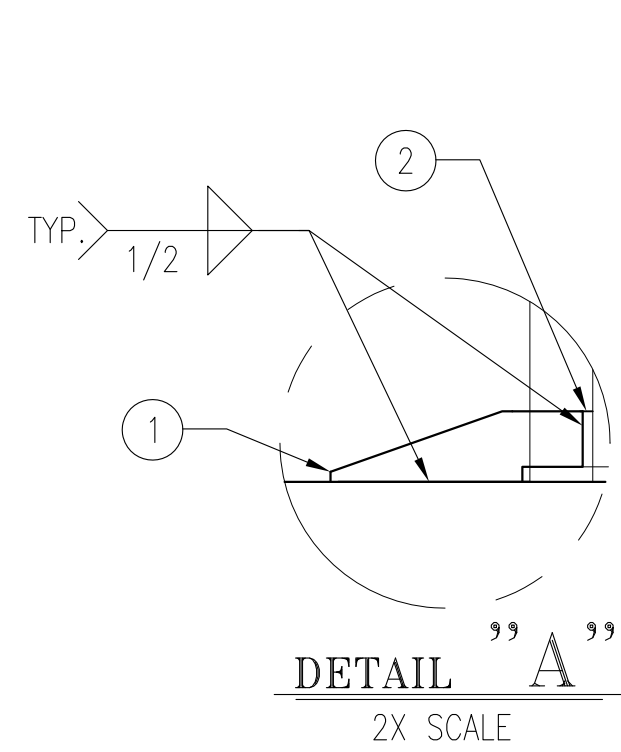


**NOTES**

- ITEM 1 MAY HAVE TO BE TRIMMED TO FIT UP AROUND THE BASE PLATE OF THE TRANSFORMER.
- ITEM 2 TO BE PLACED AGAINST WALL OF TRANSFORMER, THEN WELDED TO ITEM 1.
- ONCE THE SET-UP FOR ITEM 1 & 2 IS CONFIRMED IT IS ACCEPTABLE TO WELD ITEM 1 & 2 TOGETHER BEFORE APPLYING TO THE RAIL CAR.



CAR SERIES KRL 701200-701229



DESCRIPTION/BLANK SIZE	MATERIAL	QTY.	PART NUMBER
3 BRACKET - 1" x 1'-0" x 1'-8 1/4"	A36	10	2-A060-01-2
2 FACE PLATE - 1" x 6" x 6"	A36	8	2-A060-01-2
1 END PLATE - 1" x 8" x 2'-1"	A36	8	2-A060-01-1

LIST OF MATERIALS			
COPYRIGHT 2009 TRANSPORTATION TECHNOLOGY SERVICES, INC.			
DRAWN:	RTJ		
DATE:	06/01/09		
CHECKED:			
DATE:			
TOLERANCES:			
UNLESS NOTED:			
DIM'S: ± 1/8"			
ANGLES: ± 1°			
HOLE Ø: ± 1/32"			
REV.	BY	DATE	SCALE: NEXT ASSEMBLY NO. DRAWING NO. SHT.
A	EBT	6/5/09	1=20 2-A060-01 1/1