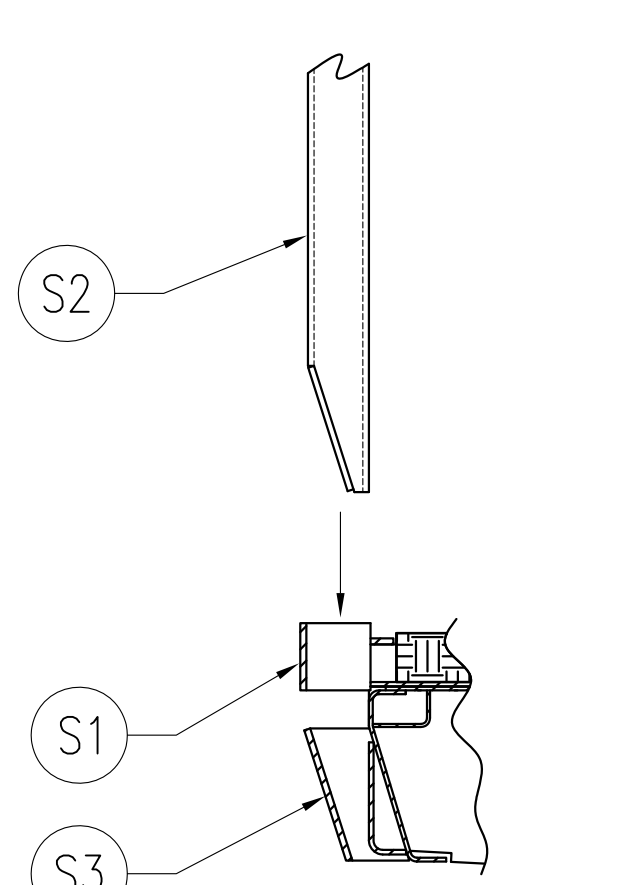
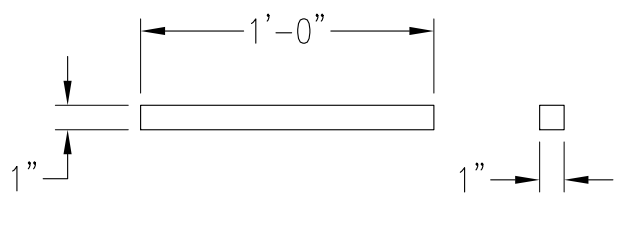


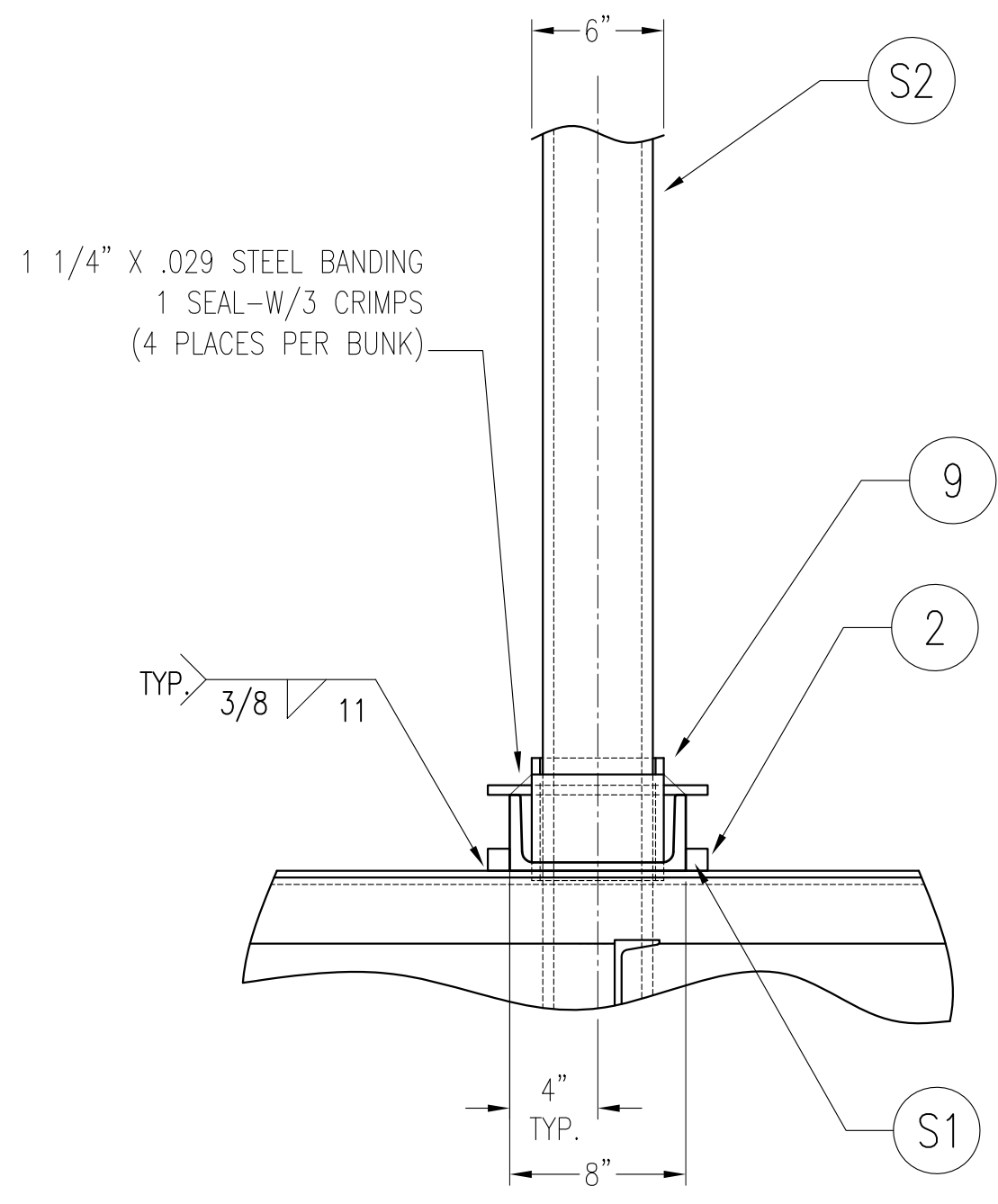
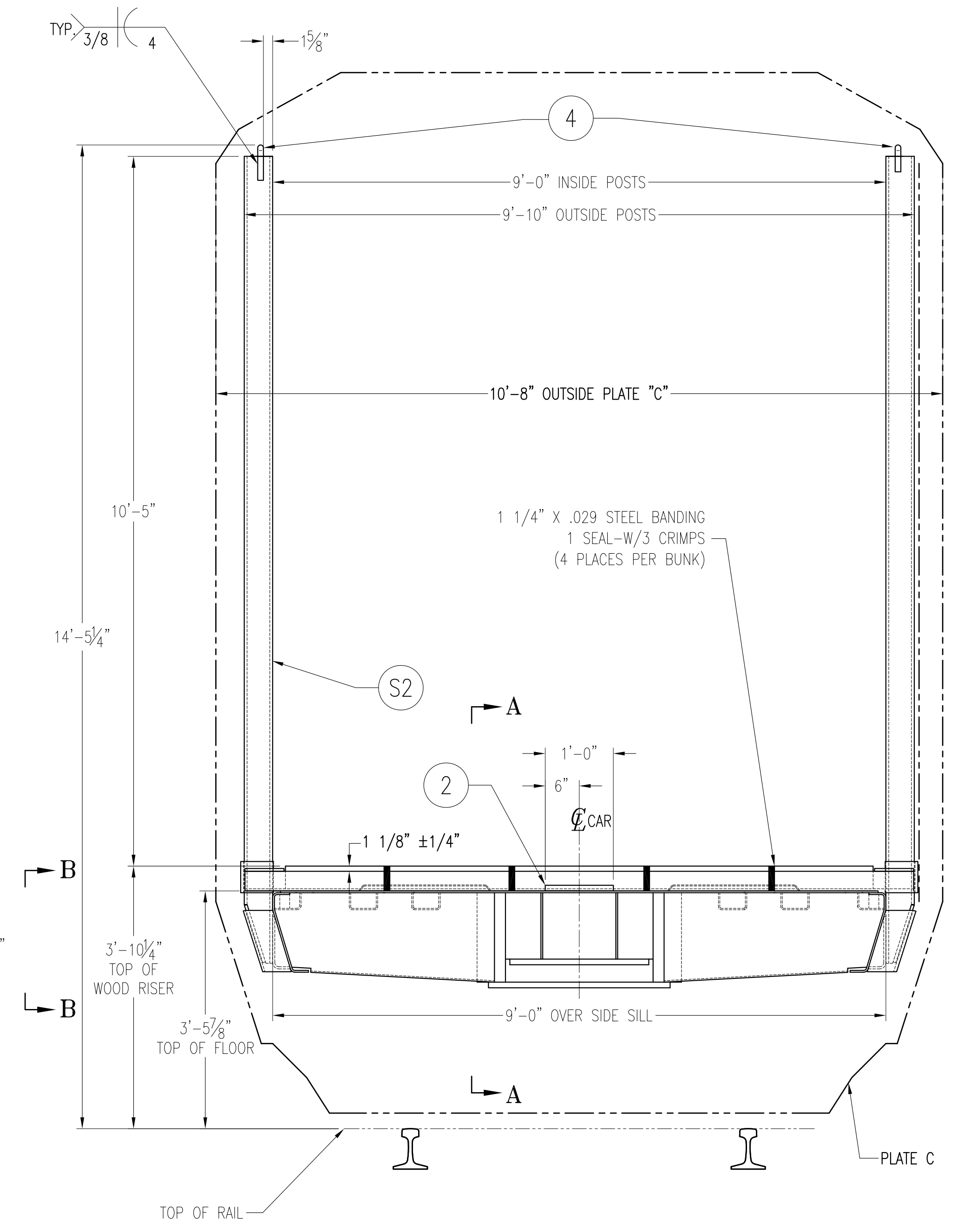
HALF SCALE



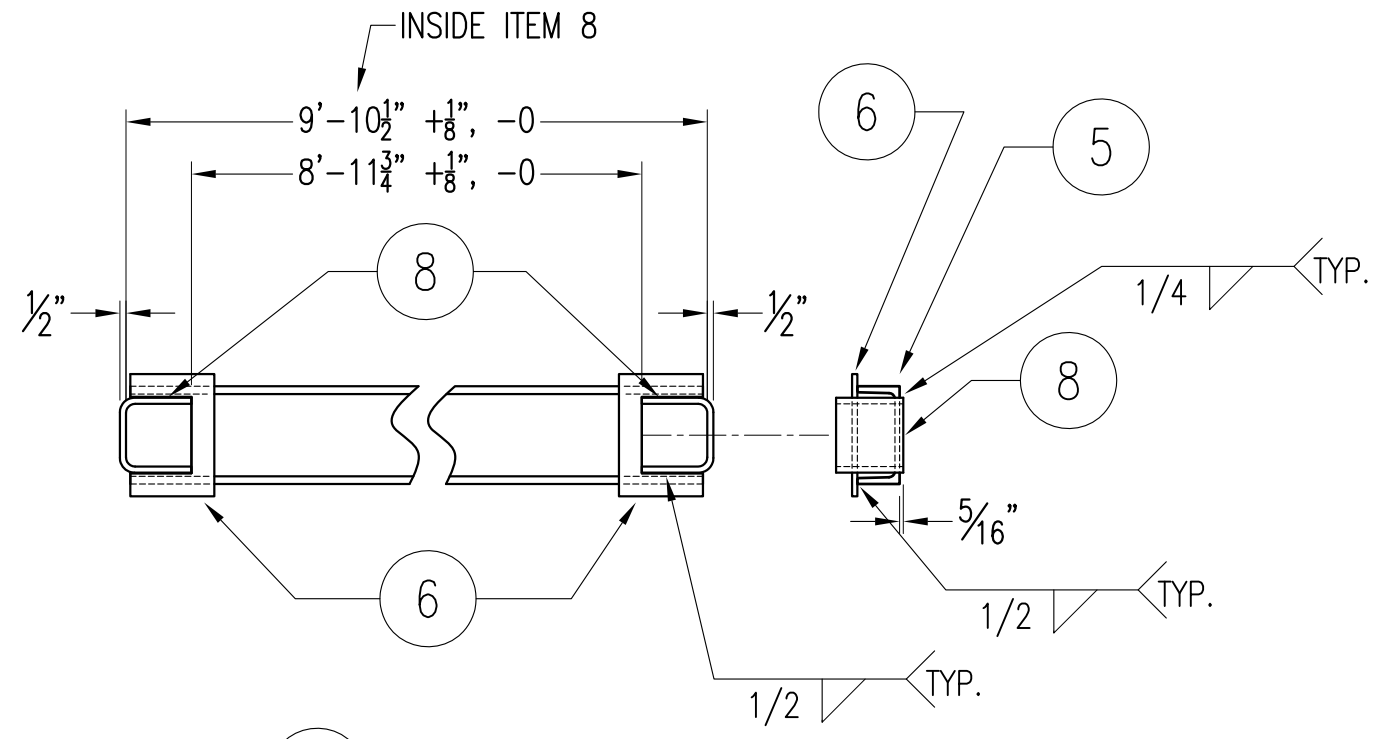
POST APPLICATION



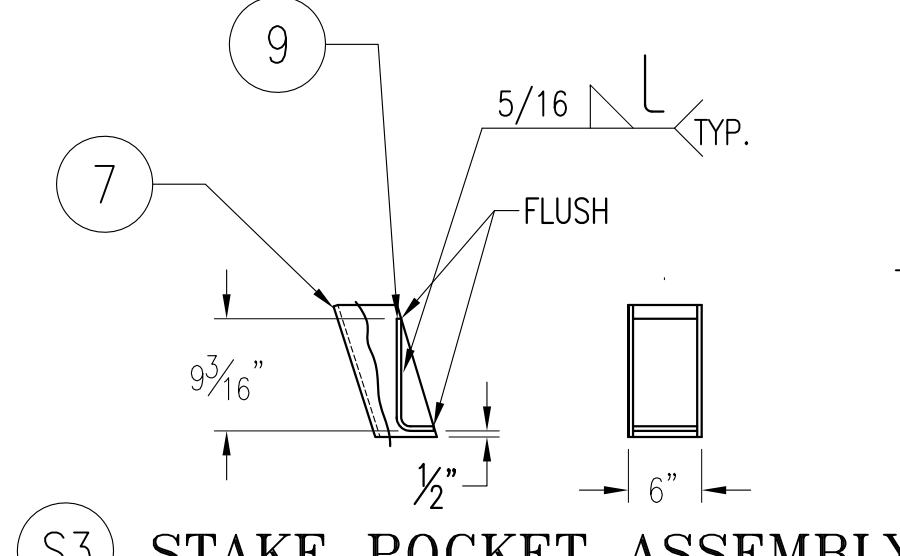
2 REINFORCEMENT
2X SCALE



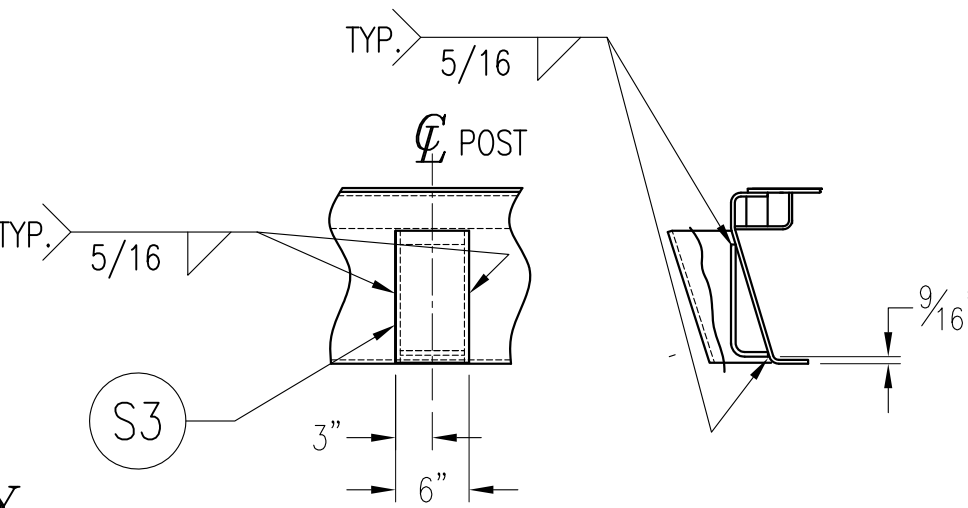
SECTION A-A
2X SCALE



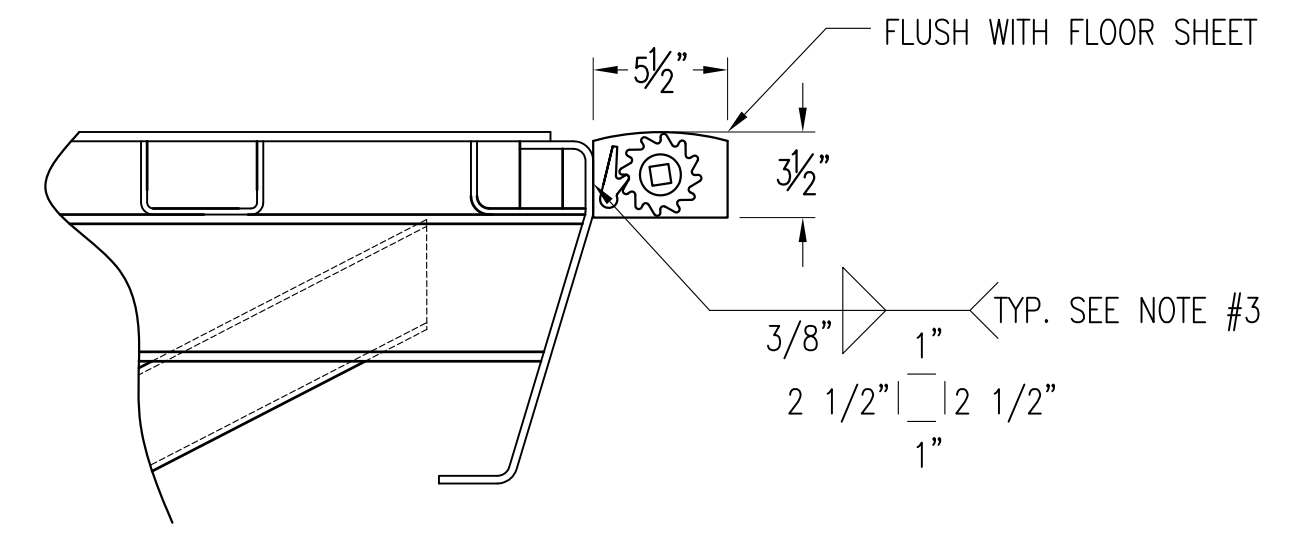
S1 BUNK ASSEMBLY



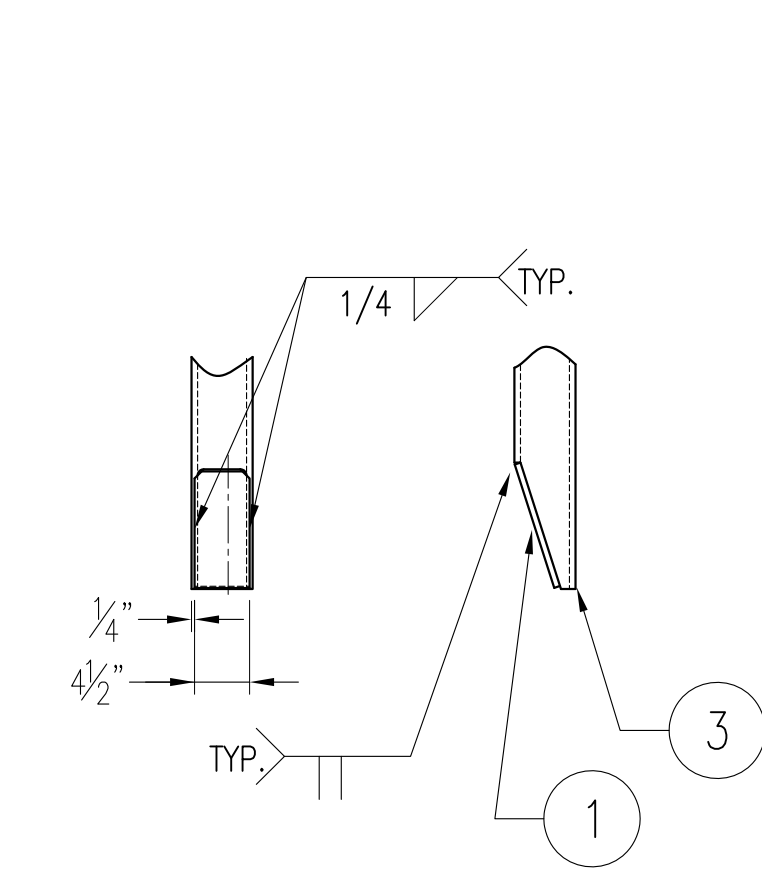
S3 STAKE POCKET ASSEMBLY



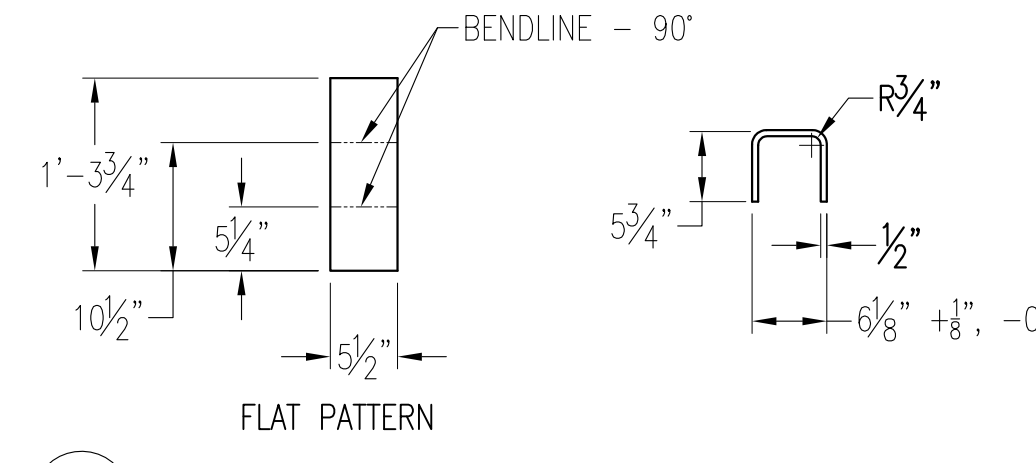
VIEW B-B



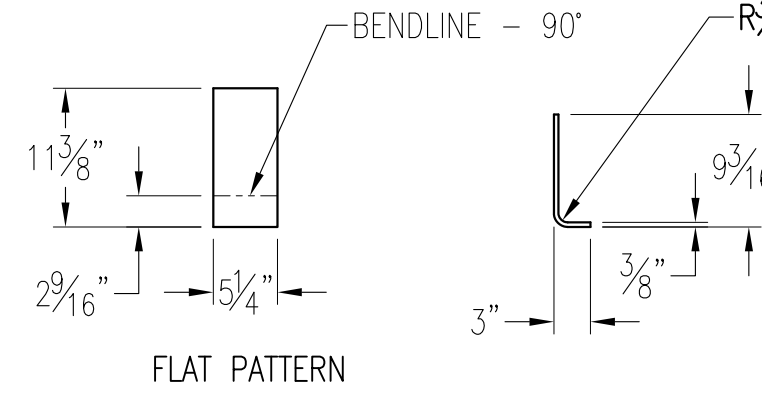
WINCH APPLICATION
2X SCALE



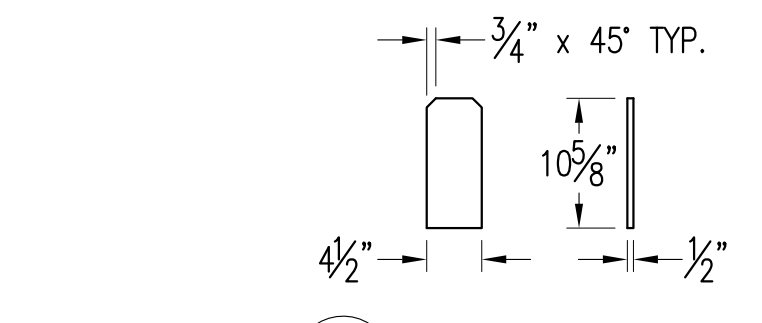
S2 POST ASSEMBLY



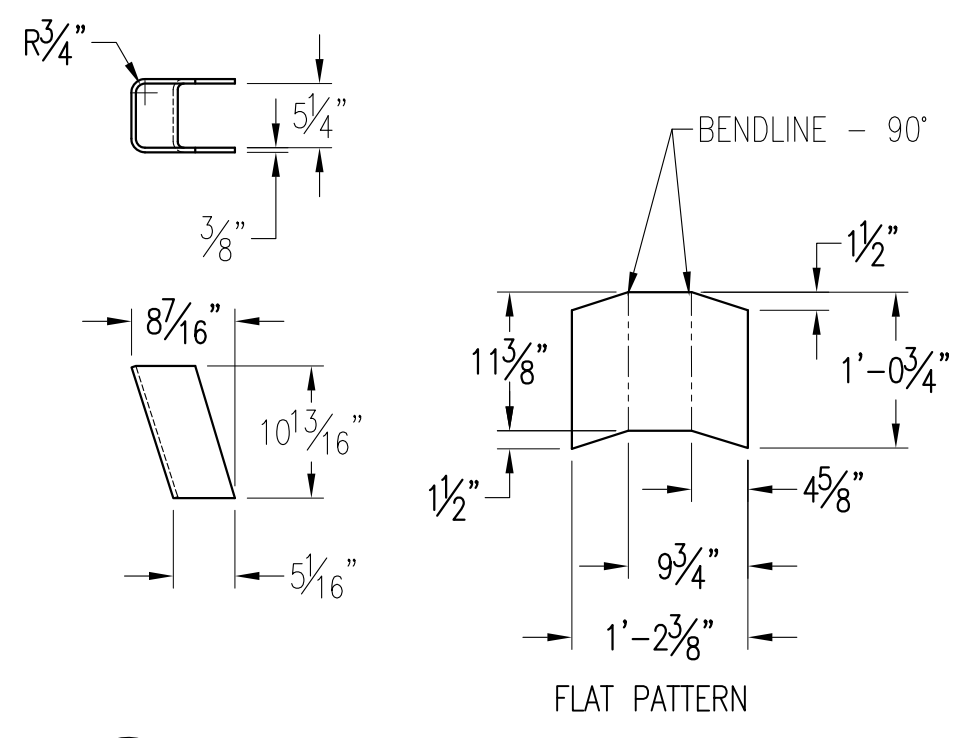
8 REINFORCEMENT-CHANNEL



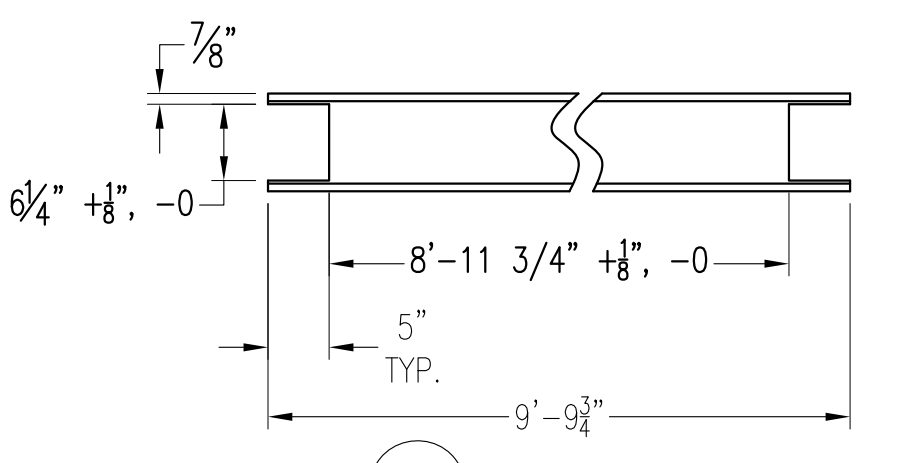
9 BACK PLATE



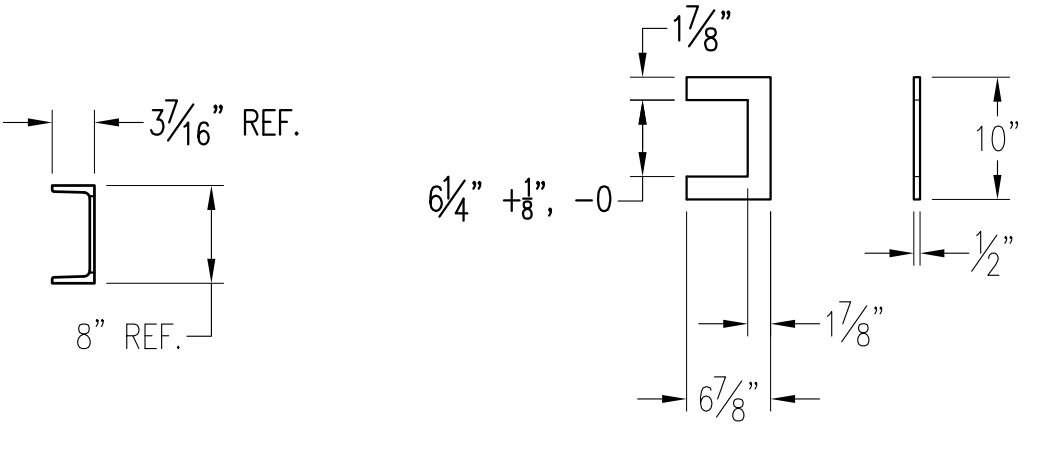
1 CHANNEL



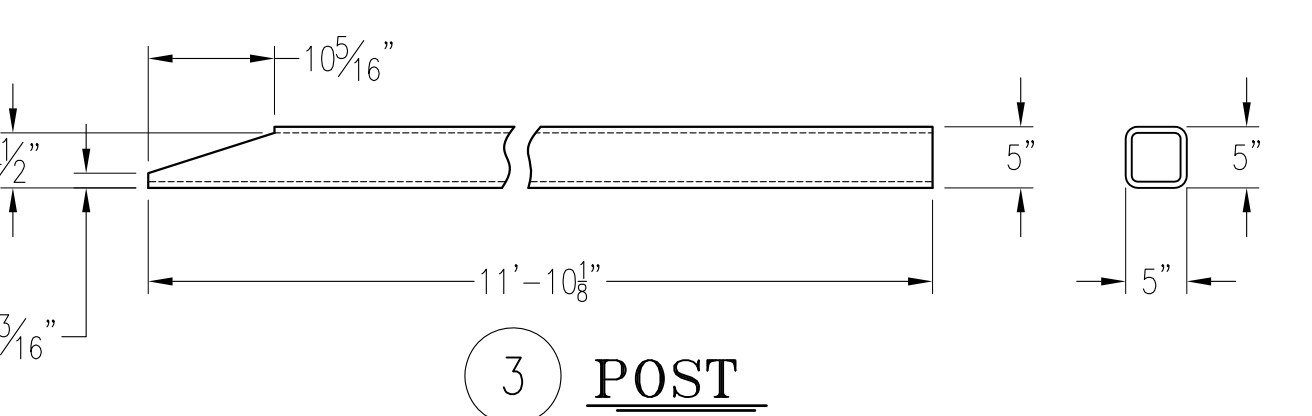
7 STAKE POCKET



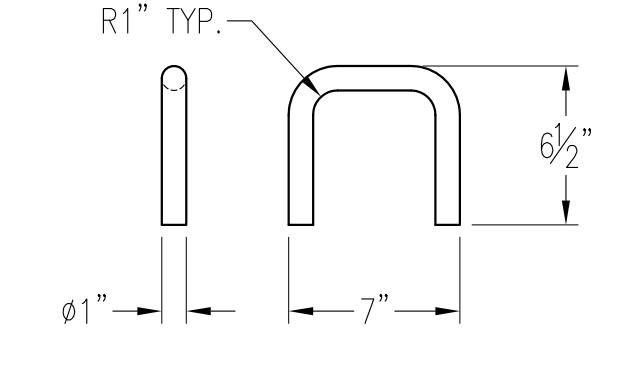
5 CHANNEL



6 BASE PLATE



3 POST



4 BANDING ROD
2X SCALE

NOTES

- 1). TERMINATE ALL WELDS 1/4" FROM EDGES.
- 2). GRIND ALL SHARP CORNERS OR EDGES.
- 3). 32 WINCHES PER CAR. 5000# CAP., 4" STRAP

SUB-ASSEMBLY	QTY.	PART NUMBER
S3 STAKE POCKET ASSEMBLY	20	GS06-7-04-S3
S2 POST ASSEMBLY	16	GS06-7-04-S2
S1 BUNK ASSEMBLY	8	GS06-7-04-S1

ITEM NO.	DESCRIPTION/BLANK SIZE	MATERIAL	QTY. ASSY	PART NUMBER
10	WOOD RISER - 4" X 6" X 8'-7 1/2"	OAK	8	GS06-7-04-10
9	BACK PLATE - 3/8" X 5 1/4" X 11 3/8"	A572-50	20	GS06-7-04-9
8	REINFORCEMENT-CHANNEL - 1/2" X 5 1/2" X 1'-3 3/4"	A572-50	16	GS06-7-04-8
7	STAKE POCKET - 3/8" X 12 3/4" X 1'-2 3/8"	A572-50	20	GS06-7-04-7
6	BASE PLATE - 1/2" X 10" X 6 7/8"	A572-50	16	GS06-7-04-6
5	CHANNEL - MCB@21.4#/FT. X 9'-9 3/4"	A36	8	GS06-7-04-5
4	BANDING ROD - Ø1" X 1'-4 11/16"	A36	16	GS06-7-04-4
3	POST - TS 5" X 5" X 1/2" X 11'-10 1/8"	A500 GR. C	16	GS06-7-04-3
2	REINFORCEMENT BUNK - 1" X 1" X 1'-0"	A36	20	GS06-7-04-2
1	CLOSURE - 1/2" X 4 1/2" X 10 5/8"	A36	16	GS06-7-04-1

DRAWN: EBT
 DATE: 1/13/07
 CHECKED:
 DATE:
 TOLERANCES:
 UNLESS NOTED:
 DIMS: ± 1/8"
 ANGLES: ± 1°
 HOLE Ø: ± 1/32"

COPYRIGHT 2006 TRANSPORTATION TECHNOLOGY SERVICES, INC.
Transportation Technology Services
 1723 E Southlake Blvd, Ste 200
 Southlake, TX 76092

LOG BUNK ASSEMBLY (REMOVABLE)
 SCALE: 1=16
 NEXT ASSEMBLY NO.
 DRAWING NO. GS06-7-04
 SHEET 1/1