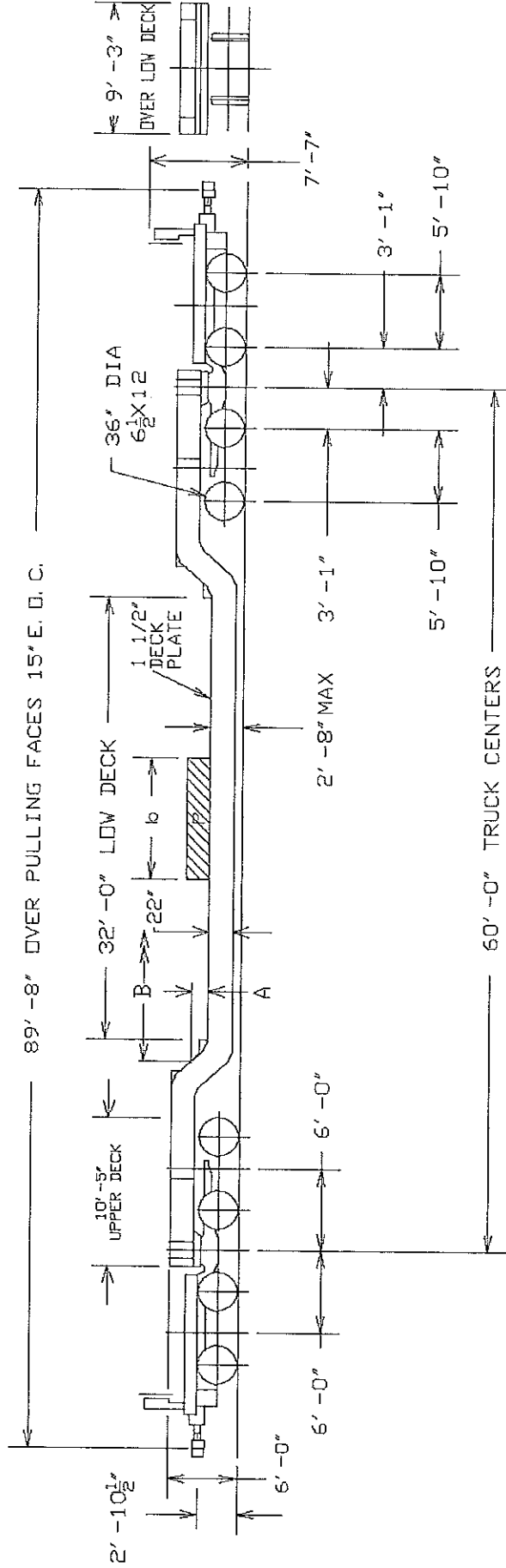


2' - 8" DECK HEIGHT ABOVE RAIL IS MEASURED AT CENTER OF CARBODY, INCLUDING CAMBER, WITH A LOAD EQUAL TO 50% OF LOAD LIMIT UNIFORMLY DISTRIBUTED OVER FULL LENGTH OF DEPRESSED DECK.



CAR CLASS	CAR NUMBER	LOAD LIMIT LBS	LIGHT WEIGHT LBS
IDH32	130600	370,800	155,200
IDH32	130601	370,500	155,500
IDH32	130602	370,300	155,700
IDH32	130603	370,500	155,500
IDH32	130604	370,300	155,700
KDH32	130605	366,000	160,000
	AVERAGE	369,700	156,300

BOTTOM OF LOAD ABOVE DECK A	MAX. LENGTH OF LOAD B
12"	34' - 8"
18"	35' - 7"
24"	36' - 6"

CAR NUMBERS QTTX 130600-130605



TTX COMPANY  
CHICAGO, ILLINOIS

CAR WILL CARRY A CONCENTRATED LOAD AT THE CENTER OF THE CAR EQUAL TO THE LOAD LIMIT

-CENTER OF GRAVITY - EMPTY = 30.2" ATR  
-CLEARANCE PROFILE WITHIN AAR PLATE \*C\*

180 TON, 32 FOOT DECK  
DEPRESSED CENTER FLAT CAR

CLASS	DATE	REV	7721
IDH32 & KDH32	06-19-09	F	